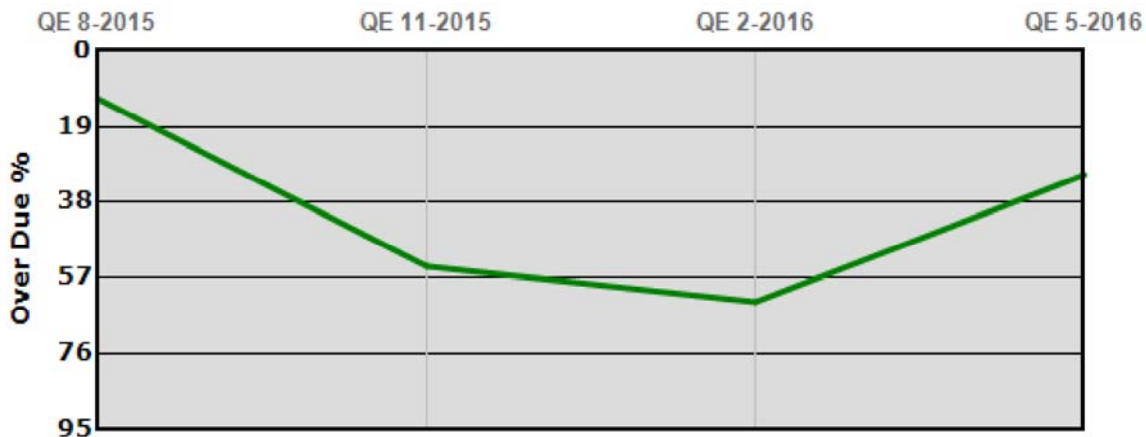


**CONFIDENTIAL FOR YOUR CREDIT DEPARTMENT USE ONLY**  
**Furniture Manufacturers Credit Association**

**FMCA DEALER TREND REPORT FOR:  
 DOE'S FURNITURE GALLERY(886758)**

**Dealer Pay History Performance**



Quarter End Month/ Year	Avg Days Slow	High Balance	Amount Owed	Amount Past Due	Over Due %	Reporting FMCA Members
QE 5-2016	9	\$3,878,434.00	\$1,614,514.00	\$508,115.00	31	24
QE 2-2016	6	\$3,402,400.00	\$1,137,470.00	\$712,717.00	63	22
QE 11-2015	27	\$2,884,100.00	\$984,940.00	\$536,333.00	54	22
QE 8-2015	28	\$2,829,119.00	\$1,143,424.00	\$142,408.00	12	22

**NOTE: The above information represents the quarterly pay history for the dealer over the past 12 months. If there are fewer than 4 reporting FMCA members for any given quarter, the trend analysis data for that quarter will not display to preserve the integrity of the trend report. FMCA does not assume to make an evaluation of the dealer's pay history based on this information.**